

GEORGIA DAIRYFAX

<http://www.ads.uga.edu/extension/newsletters.html>

JANUARY FEBRUARY MARCH 2015

Dear Dairy Producers:

The enclosed information was prepared by the University of Georgia Animal and Dairy Science faculty in Dairy Extension, Research & Teaching. We trust this information will be helpful to dairy farmers and dairy related businesses for continued improvement of the Georgia Dairy Industry.

INSIDE THIS ISSUE: January, February, and March 2015

UGA Dairy Science Club Makes Georgia Proud! By: Dr. Bohlen & Dr. Graves, UGA Dairy Science Club Advisors	Page 2 - 4
Goin' Showin' in Athens – Results from the 18th UGA Dairy Science Club Heifer Show By: Drs. Jillian Bohlen & William Graves	Page 5
Harvesting Winter Animals to Maximize Quality By: Dr. John K. Bernard	Page 6 - 7
2015 State Commercial Dairy Heifer Show By: Dr. Bohlen & Dr. Graves	Page 8 - 10
Tips for Cold Weather Teat Dipping By: Dr. S. C. Nickerson	Page 11 - 12
Heat Stress and Nutrient Management Workshop By: Dr. John K. Bernard	Page 13
Herd it Through the Bovine Youth Corner By: Dr. Jillian Bohlen and Dr. William Graves	Page 14 - 15
Review Your Decisions By: Dr. Lane O Ely	Page 16
Top 20 DHIA Herds By Test Day Milk and Fat Production for Dec. 2014, Jan. and Feb. 2015 & Low Herds for SCC Score	Page 17 - 25

Sincerely,



William M. Graves
Professor & Extension Dairy Scientist
wgraves@uga.edu

County Extension Director or County Agent

UGA Dairy Science Club Makes Georgia Proud!

Drs. Bohlen and Graves, UGA Dairy Science Club Advisors

American Dairy Science Association Student Affiliate Division Meetings



On February 26th – March 1st, 2015 a delegation of the University of Georgia Dairy Science Club attended the Regional meetings for the American Dairy Science Association Student Affiliate Division. This year's annual meeting was hosted by the University of Kentucky in Lexington. The trip up was both exciting and slow going (not a good combination) as the South was hit with a big winter storm! We made it safe and sound on Thursday night after a few stops along the way to look over into a snowy Talulah Gorge and watch snow tubers running down the front of Rabun Gap-Nacoochee school.

This year, UGA had one of its largest delegation with nine students competing in a variety of both business and social networking, industry tours, and competitive events. These students were Lily Masa, Stephanie Williammee, Sarah Jane Thomsen, Emily Wright, Alicia Sweeney, Halie Tuten, Kayla Alward, Madison Rose, and Hayleigh Boyd with club's co advisor Dr. Jillian Bohlen.

Farm tours included a dairy farm that milks 50 cows with a robot and another that uses a composted bedded pack instead of freestalls for dairy cow housing. The group was also able to tour the country's oldest, continuously operating distillery Buffalo Trace.

The group participated in a number of different events to include quiz bowl, scrapbook, paper presentations, website, and outstanding chapter. The following papers were presented at the regional meetings in competition.

- “Fairlife milk: protein for the dairy industry to build on” by Alicia Sweeney in the Dairy Foods category
- “Long term impact of faulty milking equipment on fresh cows and profits” by Kayla Alward in the Dairy Production category
- “Assessing the impact of bovine fecal contamination in water on health and management practices” by Sarah Jane Thomsen in the Original Research category

The group again enjoyed many successes with the following accolades:

- 1st place Scrapbook
- 1st place Website
- 2nd place Original Research Paper Presentation
- 2nd Place OVERALL CHAPTER
- Executive Office – Halie Tuten (Officer at Large)

The University of Georgia Dairy Science Club’s bid was accepted to host this event in 2016!



College Aggies On-Line Food Drive Winners



This year, the University of Georgia's Dairy Science Club participated in a program called "College Aggies On-line" which is an initiative put on by the Animal Agriculture Alliance. Through this program club members participated in a wide variety of events from social media conversations, public forums on debunking myths about food, activities on how to get our message across, and many other events engaging the general public. The premise is to learn how to "Advocate" and close the gap between producers and consumers through social media, personal interactions and stories.

The club fell just shy of the top three nationally. However, they did receive a pleasant surprise through e-mail a few weeks after the contest's conclusion. That e-mail message read:

Congratulations to the University of Georgia Dairy Science Club for winning the College Aggies Online Food Drive Challenge!! Your club collected the most pounds of food this year!

The club's reward was the most exciting part! In just a few weeks the company Tyson, a partner with Animal Agriculture Alliance, would donate protein to the food bank where the club's previous 267 pounds of food had previously gone.

On Tuesday, March 3rd, a massive truck wheeled into the Food Bank of Northeast Georgia in Athens. Aside from representative from the UGA dairy club, there were representatives from Animal Agriculture Alliance, Tyson Foods, and the NE Georgia Food Bank. **The end result was the donation of 1520 cases or 30,400 pounds of chicken.**

The ability to spread the word about where food comes from, to tell the story of farmers in Georgia, and to give back in the form of a huge food donation marks one of the most rewarding experiences had by many of the club's members.

Want to read more about this donation? Visit:

<http://www.tysonfoods.com/Media/News-Releases/2015/03/Tyson-Donates-Chicken-to-Food-Bank.aspx>

Goin' showin' in Athens – Results from the 18th UGA Dairy Science Club Heifer Show

By Drs. Jillian Bohlen & William Graves, UGA Dairy Extension



Over 230 heifers were exhibited in the UGA Dairy Science Club Commercial Heifer Show in Athens on February 7, 2015. This year's judges were Mary and Michael Creek from Palmyra Farm in Hagerstown, MD. This year's show chair was Brooke Helton and our club president is Madison Rose. After a morning of showmanship competition by grade in school, Junior showmanship champion was Ashley Dooley from Putnam Co. Senior showmanship champion was Alyssa Rauton from Burke FFA.

Over 24 "Little Dawgs" exhibited their showmanship skills before we began weight classes. Junior Champion went to Catlyn Johnson (shown below with judge Michael Creek & her Holstein calf) from Morgan Co. Junior Reserve Champion went to Sarah Ullon from Cowetta Co. Senior Grand Champion went to Michaela Pollex from Burke Co. (shown below with judge Mary Creek & her Brown Swiss heifer) and Reserve to Elizabeth Mansour from Cowetta Co. The winner for this year's T Shirt design contest went to Michaela Pollex from Burke Co. In the judging contest, over 30 youth participated. Jennifer Brinton from Cowetta Co. won scoring 239 out of 250 possible points.



Special thanks go to this year's sponsors: GA Dairy Youth Foundation, GA Farm Bureau, Godfrey Feeds, AG GA Farm Credit, Hennessy Lexus, Southern Swiss, MD VIR Dairy Producers, Genex, Select Sires, American Breeder's Service, The Helton Family, London Farms, S & S Interests, Cornbread and Caviar, & Century Print Shop.

Harvesting Winter Annuals to Maximize Quality

John K. Bernard
Dairy Nutrition and Management

As spring approaches, it is time to get ready to harvest winter annual forages. These forages can provide high quality forage for use in rations throughout the year when harvested in the correct stage of maturity and stored properly. Protein and energy content and digestibility will be greatest when these forages are harvested in the vegetative or early boot stage of maturity. Because the weather is not suitable for drying to produce hay, most winter annuals are harvested as silage or baleage. The forages should be wilted to prevent seepage and promote desirable fermentation. If harvested too wet, there is a greater change for poor fermentation and seepage which decreased nutrient content and animal intake and performance. Good drying conditions are needed to reduce the moisture content of the forage quickly so that cell respiration of soluble carbohydrates is minimized. To facilitate dry and minimize contamination with ash (soil), the mower should be raised slightly (3-4 inches) when cutting to keep the forage off the ground as much as possible and facilitate air movement through the forage. Putting the forage in a wide windrow or swath speeds drying more than a narrow swath, so adjust your cutter to optimize drying rates. If the forage will be tedded, allow it to dry a few hours before tedding and set the tedder so the tines do not stir the ground and add ash (soil) to the forage. Once the forage has been wilted to 35 to 50% DM, it should be harvested and stored quickly.

When harvesting, a bacterial inoculate should be applied during chopping or baling. Research have shown that inoculates reduce pH quicker and improves aerobic stability effectively in hay crop silages. Select inoculates that have been shown to work under research conditions to speed initial fermentation and improve aerobic stability when feeding. Be sure to follow the manufactures instruction for storage, mixing and application to optimize results.

When making baleage, the bales should be tight to minimize the air inside the bale. The bale should be wrapped with a minimum of 6 wraps of plastic with a UV inhibitor within 4 hours after baling. Ideally the baler is equipped with knives to process the forage into smaller pieces which exposes more sugar to speed up fermentation. When chopping these forages, the theoretical chop length should be approximately 1 inch to facilitate packing. The forage should be packed tightly and then sealed as soon as possible after harvest has been completed. Research has shown that delayed covering results in poor fermentation due to extended exposure to air as determined by higher pH, very low lactic acid concentrations, and increased concentrations of yeast. Many producers use an oxygen barrier film under the normal plastic which provides

additional protection and reduces spoilage in the top layer. Be sure the plastic is weighted down to push air out and prevent air from getting under it after opening.

Winter annual forage can be an excellent forage for feeding lactating dairy cows when harvested and stored correctly. Harvest is always challenging given the poor drying conditions during spring. Once forages reach the desired stage of maturing, cutting and wilting the forage and then harvesting quickly and covering the immediately afterwards to promote good fermentation will help preserve the nutrients that can be used to support milk production and growth of dairy animals.

2015 State Commercial Dairy Heifer Show

By Drs. Bohlen & Graves, UGA Dairy Extension

Record cold temperatures and having water turned off at night in the barns may be what many remember from this year's State Junior Livestock Show in Perry, GA. After two days, nine showmanship classes with 19 heats, Master FFA & 4-H Showman, 20 weight classes, four divisions champions and the top five animals, it would be hard to call this year's show anything but successful as well as outstanding. In the barn, there were a total of 279 heifers that were weighed in from 219 dairy exhibitors. Our Judge was Ronnie Ryder, Upton, KY.

1st PLACE SHOWMANSHIP:

4 TH Grade	Jiles Coble Burke Co.
5 th Grade	Nicholas Cagle Morgan Co.
6 th Grade	Trent Maddox Jasper Co.
7 th Grade	Emma Newberry Morgan Co.
8 th Grade	Jorja Cooper Summerville Co.
9 th Grade	Ethan Martin Houston Co.
10 th Grade	Savannah Lynch Houston Co.
11 th Grade	Austin Swinamer Gilmer Co.
12 th Grade	Monica Schaapman Wilcox Co.

Master FFA Showman Savannah Lynch Houston Co.

Master 4-H Showman Monica Schaapman Wilcox Co.

1st PLACE WEIGHT CLASSES

Class 1	Brandon Price Putnam Co.
Class 2	Ashlyn Reddick Burke Co.
Class 3	Tori Smith Houston Co.
Class 4	Delacy Styles Putnam Co.

Class 5 Ashlyn Hasty Whitfield Co.

Division Champion Delacy Styles Putnam Co.

Division Reserve Ashlyn Hasty Whitfield Co.

Class 6 Kara Wilson Houston Co.

Class 7 Constance Johnson Morgan Co.

Class 8 Desiree Singleton Houston Co.

Class 9 Eliza Jane Glover White Co.

Class 10 Morgan Paterson Jasper Co.

Division Champion Eliza Jane Glover White Co.

Division Reserve Kara Wilson Houston Co.

Class 11 Savannah Lynch Houston Co.

Class 12 Morgan Patterson Jasper Co.

Class 13 Alissa Gallaher Peach Co.

Class 14 Kesley Kohl Putnam Co.

Class 15 Monica Schaapman Wilcox Co.

Division Champion Monica Schaapman Wilcox Co.

Division Reserve Savannah Lynch Houston Co.

Class 16 Elizabeth Mansour Coweta Co.

Class 17 Elizabeth Mansour Coweta Co.

Class 18 Monica Schaapman Wilcox Co.

Class 19 Callie Cook Houston Co.

Class 20 Olivia Erickson Lee Co.

Division Champion Elizabeth Mansour Coweta Co.

Division Reserve Monica Schaapman Wilcox Co.

5th Place Overall - Ashlyn Hasty Whitfield Co.

4th Place Overall - Delacy Styles Putnam Co.

3rd Place Overall - Eliza Jane Glover White Co.

Reserve Grand Champion - Elizabeth Mansour Coweta Co.

Grand Champion - Monica Schaapman Wilcox Co. (Shown in picture above)

COUNTY GROUPS (of 5)

1. Houston FFA
2. Houston FFA
3. Coweta 4-H
4. Burke 4-H
5. White 4-H

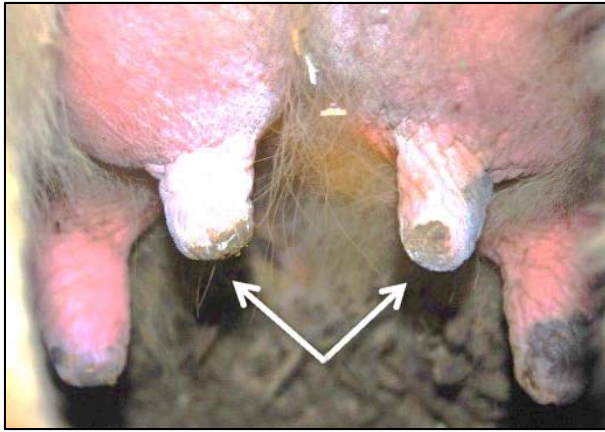
Our thanks go to the Southeast Milk Dairy Check off, the GA Dairy Youth Foundation, Georgia Farm Bureau, Southern States, GA Young Farmers, Big Indian Show Chow, Syngenta and the GA National Fairgrounds for their support of this activity. We hope to see many of these participants at the commercial show at the Georgia National Fair this fall!



Tips for Cold Weather Teat Dipping

S. C. Nickerson

During the winter months, the questions often arise: “Should I continue to dip teats during severe cold weather?” or “Under what conditions should I stop teat dipping to avoid frozen teats?” For the most part, teats are not affected by the typical cold temperatures experienced in sheltered, cold, free stall housing if teats are completely dry. However, severe cold temperatures combined with wind chill can result in frostbite even when teats are dry. Therefore, any time cows exit a parlor into cold weather conditions in which the combination of cold and wind result in wind



chills of -25°F , preventive steps need to be taken. Ample amounts of dry bedding material should be placed in free stalls, and construction of effective windbreaks around parlor exits and feed bunks located outside buildings minimizes the effect of the cold on teat skin surfaces. Note that at wind speeds of less than 5 mph, temperatures as low as -20°F can be tolerated; however, with extremely high winds (30 mph) and temperatures as high as 15°F , wind chill could be a problem.

Wet skin or skin surfaces that are frequently washed resulting in loss of some of the natural oils are more vulnerable to frostbite than skin that is kept dry. Thus, the question of how to manage teat disinfection during winter is a logical question. The most common solution is to stop teat dipping entirely. It could be reasoned that during severe cold weather, bacterial growth on teats and in the environment is much less; therefore, teat disinfection is not quite as crucial during those periods. However, in some regions of the northern United States the complete cessation of teat dipping during the cold winter months has allowed the spread of contagious mastitis pathogens. In addition, it should be pointed out that omitting teat dipping does not assure that teats are dry. In severe cold weather, even the thin milk film should be dried before the cow is turned out of the parlor.

A more preferable option is to teat dip every cow regardless of weather conditions, but under severe cold conditions, allow 30 seconds of contact time and then wipe or blot teats dry prior to the cow leaving the parlor. This procedure would add approximately 20 seconds per cow more time to each milking depending on the parlor design and milking routine. However, the consistently proven benefits of teat dipping in the reduction of intramammary infection should be realized.

Another option is to use a powdered disinfectant, which when applied immediately after milking, sticks to the moist teat. In theory, this idea has great appeal in solving the problem of teat dipping

during subzero temperatures, not only because of its disinfectant characteristics, but also because it serves to dry the teat. Also, there are liquid teat dips formulated to reduce the chances of frostbite during cold weather. Many current formulations have an adjusted concentration of the active ingredients to offset the possible negative effect that added emollients may have on the efficacy of the product. However, these teat dips, under extreme cold, will also freeze. Therefore, the safest course of action when using liquid teat dips is to dip the teat, allow a 30-second contact time, and then blot the teat dry before returning the cow to the cold housing area.

Heat Stress and Nutrient Management Workshop

John K. Bernard
Dairy Nutrition and Management

A heat stress and nutrient management workshop will be held on April 21, 2015 at the University of Georgia Tifton Campus Conference Center. Registration will begin at 9:30 am for the program which will provide continuing education credits for certified operators. After the program, attendees are invited to go to the Dairy Research Center for a tour of the facility and demonstrations. The program for the day is outlined below. If you have questions, please contact Dr. John Bernard (229-391-6856 or jbernard@uga.edu) or Dr. Sha Tao (229-386-3216 or stao@uga.edu). We look forward to seeing you April 21.

- | | |
|----------|--|
| 9:30 am | Registration |
| 10:00 am | Welcome
Dr. John Bernard, Animal & Dairy Science, University of Georgia, Tifton |
| 10:05 am | How well is your heat abatement system working?
Dr. David McClary, Elanco Animal Health |
| 10:35 am | Managing dry cows during heat stress
Dr. Sha Tao, Animal & Dairy Science, University of Georgia, Tifton |
| 11:05 am | Effects of heat stress on calves
Ana Paula Alves Monteiro, Animal & Dairy Science, University of Georgia, Tifton |
| 11:35 am | Mastitis prevention and control during heat stress
Dr. Steve Nickerson, Animal & Dairy Science, University of Georgia, Athens |
| 12:05 pm | Lunch |
| 1:00 pm | Keeping records to comply with your Nutrient Management Plan
Melony Wilson, Animal & Dairy Science, University of Georgia, Athens |
| 1:30 pm | Preparing for an inspection of your facility
Courtney Canterbury, CAFO Manager, Georgia Department of Agriculture |
| 3:00 pm | Open house at Dairy Research Center |

Directions: The University of Georgia Tifton Campus Conference Center is located just off Exit 64 of I-75 at 15 RDC Rd, Tifton, GA 31793.

Herd it Through the Bovine

Youth Corner

Drs. Jillian Bohlen and William Graves

“Opportunity is missed by most people because it is dressed in overalls and looks like work”

This is a quote by Thomas A. Edison that serves as a favorite for Dr. Jillian Bohlen. Opportunities may come and go throughout life but they are always most abundant in our youth. In the next few months, there are a number of great opportunities for youth within this state to get involved and learn more about the dairy industry. Each of these opportunities provides you not only with the ability to learn something new but the chance to meet new people and experience new activities. The more opportunities you are a part of, the more doors of possibilities are opened for your future! Scan the list and pick some out. They may require a little of your time and effort but the end result is you did not miss an opportunity because it looked like a little bit of work.

State Dairy Judging Competition

This year's competition is scheduled for Friday, March 27th. Check-in will be from 2:30-3:00 with the contest starting promptly at 3:30. For 4-H agents, online registration closes on March 20th at noon.

More information as well as a quick reference guide can be located at:
http://georgia4h.org/livestock/dairy/dairy_judging.htm

State Dairy Quiz Bowl Competition

This year's competition is scheduled for Saturday, April 18th. Registration will be at 12:00 with contest instructions following at 12:30. For 4-H agents, online registration closes on April 10th at noon.

More information as well as a quick reference guide can be located at:
http://georgia4h.org/livestock/dairy/dairy_quizbowl.htm

Southeast Dairy Youth Retreat

The event this year will be headquartered in Newberry, SC and held from July 12-16th. The retreat is for youth ages 9-19 and associated chaperones. The cost this year is anticipated to be around \$175-200 for GA Youth. This event will be filled with fun and educational activities including farm tours, hands-on workshops, and social events. Registration forms will be sent out in April with registration information due back by June 1st. Be on the lookout for more information coming soon!

National 4-H Dairy Conference

This event will be held September 27th-30th in Madison, WI. This annual event is held in conjunction with World Dairy Expo and is where participants learn about

dairy production, processing, and marketing. In addition, participants can expect to learn more about careers associated with the dairy industry. Participants must be at least 15 but not more than 18 years of age before January 1 of 2015 and not planning on exhibiting animals at World Dairy Expo or competing in the National 4-H Dairy Cattle Judging Contest. More information will be sent in May with application packets.

For Your Calendars

State 4-H Dairy Judging Competition

- March 27th 3:30 PM
- Athens, GA

Spring Dairy Show

- March 26th – 28th 9:00 AM
- Athens, GA

State 4-H Dairy Quiz Bowl Competition

- April 18th
- Athens, GA

Southeast Dairy Youth Retreat

- July 12th – 16th
- Newberry, SC

National 4-H Dairy Conference

- September 27th – 30th
 - Madison, WI
-

Review Your Decisions

By

Lane O. Ely

Professor Emeritus

One task a manager needs to perform is to review decisions that have been made. Did the decision work? Did it correct a problem? Did it prevent a problem? Did the decision lead to other problems?

Many of us do this at the end of the year or the beginning of the New Year. New Years Resolutions are often the result of reviewing the previous year's activities.

More realistically one should perform reviews more often. It is easier to remember the situation that caused a decision to be made.

Today is a good time to review decisions that were made last fall in regards to milk income. Last fall, milk prices for the UGA Teaching Dairy were \$25.00 per cwt. Today our February price is \$19.25 per cwt.

The questions are how did we handle the increased milk income and what did we do to work with the lower prices of today?

Some possible decisions that could have been made are:

- 1) Pay down loan principal and lower monthly payments. This will increase equity. It should help with the lower milk income today as the liabilities have been decreased.
- 2) Make repairs. Use the added income to make repairs to equipment or facilities that will help with efficiency or safety. Think of repairs that will have a long term positive effect. A new coat of paint is nice but it may be better for the long term to delay that new look.
- 3) Make forward purchases. If one has the storage and prices are favorable it may be useful to purchase feed, fertilizer or supplies that will be used later. This type of decision should be continually monitored as conditions continually change.

Whatever decisions were made need to be evaluated.

An old saying is "Hope for the best, budget for the average, plan for the worst." Be prepared for the changes that will force decisions to be made.

Top GA DHIA By Test Day Milk Production – Dec. 2014										
				<u>Test Day Average</u>				<u>Yearly Average</u>		
<u>Herd</u>	<u>County</u>	<u>Br.</u>	<u>¹Cows</u>	<u>% Days in Milk</u>	<u>Milk</u>	<u>% Fat</u>	<u>TD Fat</u>	<u>Milk</u>	<u>Lbs. Fat</u>	
RODGERS' HILLCREST FARMS INC.*	McDuffie	H	432	89	99.8	3.3	2.89	31325	1066	
DAVE CLARK*	Morgan	H	1123	88	94.2	3.7	2.99	28779	1017	
D & T DAIRY	Wilkes	H	54	84	91.5	2.8	2.27	26024	719	
J.EVERETT WILLIAMS*	Morgan	X	403	86	88	4	3.01	26670	1113	
J.EVERETT WILLIAMS*	Morgan	X	569	91	86.3	3.6	2.84	27557	1017	
COASTAL PLAIN EXP STATION*	Tift	H	285	90	84.9	3.6	2.67	26318	933	
J.EVERETT WILLIAMS*	Morgan	X	1754	89	84.8	3.9	2.96	25990	1040	
J.EVERETT WILLIAMS*	Morgan	X	659	88	82.6	4	3.09	24617	1010	
SCOTT GLOVER	White	H	101	89	80.9	3.7	2.59	26066	996	
DOUG CHAMBERS	Jones	H	422	88	79.3	3.6	2.44	23715	848	
MARTY SMITH DAIRY*	Wilkes	H	322	86	79.1	3.5	2.29	24068	784	
RAY WARD DAIRY	Putnam	H	144	88	79	4	2.72	23820	876	
R & D DAIRY*	Laurens	H	113	91	78.7	4	2.78	25990	957	
J.EVERETT WILLIAMS*	Morgan	X	54	93	77.9	3.9	1.99	23882	944	
VISTA FARM	Jefferson	H	93	92	77.6	3.6	2.35	24092	847	
DANNY BELL*	Morgan	H	263	91	77.1	3.9	2.57	24403	953	
IRVIN R YODER	Macon	H	204	92	75.7	3.8	2.49	23468	860	
A & J DAIRY	Wilkes	H	407	91	75.1	3.9	2.28	23847	890	
CECIL DUECK	Jefferson	H	82	90	74.7	3.6	2.16	24154	881	
MARTIN DAIRY L. L. P.	Heard	H	309	90	74.7	3.9	2.52	24085	897	
DAVID ADDIS	Wilcox	H	42	83	74.7	3.7	2.19	18411	652	

1Minimum herd or permanent string size of 20 cows. Yearly average calculated after 365 days on test. (Mo.) column indicates month of test. Test day milk, marked with an asterisk (*), indicates herd was milked three times per day (3X). Information in this table is compiled from Dairy Records Management Systems Reports (Raleigh, NC).

Top GA DHIA By Test Day Fat Production – Dec. 2014										
					<u>Test Day Average</u>				<u>Yearly Average</u>	
<u>Herd</u>	<u>County</u>	<u>Br.</u>		<u>¹Cows</u>	<u>% Days in Milk</u>	<u>Milk</u>	<u>% Fat</u>	<u>TD Fat</u>	<u>Milk</u>	<u>Lbs. Fat</u>
J.EVERETT WILLIAMS*	Morgan	X		659	88	82.6	4	3.09	24617	1010
J.EVERETT WILLIAMS*	Morgan	X		403	86	88	4	3.01	26670	1113
DAVE CLARK*	Morgan	H		1123	88	94.2	3.7	2.99	28779	1017
J.EVERETT WILLIAMS*	Morgan	X		1754	89	84.8	3.9	2.96	25990	1040
J.EVERETT WILLIAMS*	Morgan	X		42		72.2	4.1	2.94		
RODGERS' HILLCREST FARMS INC*	McDuffie	H		432	89	99.8	3.3	2.89	31325	1066
J.EVERETT WILLIAMS*	Morgan	X		569	91	86.3	3.6	2.84	27557	1017
R & D DAIRY*	Laurens	H		113	91	78.7	4	2.78	25990	957
RAY WARD DAIRY	Putnam	H		144	88	79	4	2.72	23820	876
COASTAL PLAIN EXP STATION*	Tift	H		285	90	84.9	3.6	2.67	26318	933
COASTAL PLAIN EXP STATION*	Tift	H		283	90	84.9	3.6	2.66	26361	931
SCOTT GLOVER	White	H		101	89	80.9	3.7	2.59	26066	996
OCMULGEE DAIRY	Houston	H		97	93	72.9	4	2.58	24307	893
DANNY BELL*	Morgan	H		263	91	77.1	3.9	2.57	24403	953
MARTIN DAIRY L. L. P.	Heard	H		309	90	74.7	3.9	2.52	24085	897
EARNEST R TURK	Putnam	H		413	92	73	3.7	2.5	21384	809
IRVIN R YODER	Macon	H		204	92	75.7	3.8	2.49	23468	860
EBERLY FAMILY FARM	Burke	H		699	90	71.3	4	2.46	21866	824
DOUG CHAMBERS	Jones	H		422	88	79.3	3.6	2.44	23715	848
AMERICAN DAIRYCO- GEORGIA,LLC. *	Mitchell	H		3755	89	73.5	3.7	2.42	23127	838
1Minimum herd or permanent string size of 20 cows. Yearly average calculated after 365 days on test. (Mo.) column indicates month of test. Test day milk, marked with an asterisk (*), indicates herd was milked three times per day (3X). Information in this table is compiled from Dairy Records Management Systems Reports (Raleigh, NC).										

Top GA DHIA By Test Day Milk Production – Jan. 2015										
					<u>Test Day Average</u>				<u>Yearly Average</u>	
<u>Herd</u>	<u>County</u>	<u>Br.</u>	<u>Test date</u>	<u>¹Cows</u>	<u>% Days in Milk</u>	<u>Milk</u>	<u>% Fat</u>	<u>TD Fat</u>	<u>Milk</u>	<u>Lbs. Fat</u>
RODGERS' HILLCREST FARMS INC.*	McDuffie	H	1/26/2015	438	88	99.4	3.4	2.87	31534	1064
DAVE CLARK*	Morgan	H	1/5/2015	1104	88	95.4	3.8	3.24	29025	1032
D & T DAIRY	Wilkes	H	12/9/2014	54	84	91.5	2.8	2.27	26024	719
COASTAL PLAIN EXP STATION*	Tift	H	1/19/2015	286	90	86.8	3.5	2.75	26323	933
R & D DAIRY*	Laurens	H	1/23/2015	130	90	85.4	3.4	2.63	26095	958
J.EVERETT WILLIAMS*	Morgan	X	1/12/2015	1789	89	83.1	4.2	3.11	26336	1050
MARTY SMITH DAIRY*	Wilkes	H	1/30/2015	327	85	83	3.1	2.3	24369	798
COOL SPRINGS DAIRY*	Laurens	H	12/31/2014	232	90	82.4	3.8	2.86	24663	908
RAY WARD DAIRY	Putnam	H	1/19/2015	145	89	81.4	4.2	3.25	23942	888
SCOTT GLOVER	White	H	12/27/2014	101	89	80.9	3.7	2.59	26066	996
EBERLY FAMILY FARM*	Burke	H	1/28/2015	712	91	80.5	3.8	2.83	22479	844
DANNY BELL*	Morgan	H	1/8/2015	259	91	77.8	3.9	2.69	24624	957
A & J DAIRY	Wilkes	H	1/16/2015	417	90	77.8	3.9	2.41	23798	890
VISTA FARM	Jefferson	H	12/20/2014	93	92	77.6	3.6	2.35	24092	847
DOUG CHAMBERS	Jones	H	12/29/2014	426	88	77.3	3.6	2.45	23893	851
TROY YODER	Macon	H	1/27/2015	217	88	76.2	4	2.37	22705	893
MARTIN DAIRY L. L. P.	Heard	H	1/14/2015	319	90	76.1	3.8	2.7	24207	901
IRVIN R YODER	Macon	H	1/9/2015	208	91	75.7	3.8	2.4	23243	854
B&S DAIRY	Wilcox	H	1/10/2015	729	86	75.4	3.6	2.32	23255	783
MUDDY H HOLSTEINS	Hall	H	1/3/2015	77	90	74.7	3.4	2.18	23846	791
DAVID ADDIS	Wilcox	H	1/18/2015	45	83	74.7	3.6	2.3	18777	667
1Minimum herd or permanent string size of 20 cows. Yearly average calculated after 365 days on test. (Mo.) column indicates month of test. Test day milk, marked with an asterisk (*), indicates herd was milked three times per day (3X). Information in this table is compiled from Dairy Records Management Systems Reports (Raleigh, NC).										

Top GA DHIA By Test Day Fat Production - Jan. 2015										
					<u>Test Day Average</u>				<u>Yearly Average</u>	
<u>Herd</u>	<u>County</u>	<u>Br.</u>	<u>Test Date</u>	<u>¹Cows</u>	<u>% Days in Milk</u>	<u>Milk</u>	<u>% Fat</u>	<u>TD Fat</u>	<u>Milk</u>	<u>Lbs. Fat</u>
RAY WARD DAIRY	Putnam	H		145	89	81.4	4.2	3.25	23942	888
DAVE CLARK*	Morgan	H	1/5/2015	1104	88	95.4	3.8	3.24	29025	1032
J.EVERETT WILLIAMS*	Morgan	X		1789	89	83.1	4.2	3.11	26336	1050
RODGERS' HILLCREST FARMS INC.*	McDuffie	H		438	88	99.4	3.4	2.87	31534	1064
COOL SPRINGS DAIRY*	Laurens	H		232	90	82.4	3.8	2.86	24663	908
EBERLY FAMILY FARM*	Burke	H		712	91	80.5	3.8	2.83	22479	844
EARNEST R TURK	Putnam	H		403	92	74.4	3.9	2.77	21452	808
COASTAL PLAIN EXP STATION*	Tift	H		286	90	86.8	3.5	2.75	26323	933
MARTIN DAIRY L. L. P.	Heard	H		319	90	76.1	3.8	2.7	24207	901
DANNY BELL*	Morgan	H	1/8/2015	259	91	77.8	3.9	2.69	24624	957
BILL DODSON	Putnam	H		254	88	73.1	4.1	2.68	22552	798
R & D DAIRY*	Laurens	H		130	90	85.4	3.4	2.63	26095	958
CECIL DUECK	Jefferson	H		85	90	73.1	4.1	2.63	24164	881
SCOTT GLOVER	White	H		101	89	80.9	3.7	2.59	26066	996
DAVID L MOSS	Morgan	H		86	88	68.9	4.1	2.58	19802	761
HORST CREST FARMS	Burke	H		165	86	72.1	3.9	2.56	20445	748
CHARLES STEWART	Greene	H		175	90	62.6	4.4	2.56	19082	741
HALE DAIRY	Oconee	H		159	86	62.6	4.2	2.55	15580	614
AMERICAN DAIRYCO-GEORGIA,LLC.*	Mitchell	H	1/7/2015	3797	89	73.3	3.7	2.5	23198	843
LEE WHITAKER	McDuffie	H		295	88	69.3	4	2.47	20463	777
1Minimum herd or permanent string size of 20 cows. Yearly average calculated after 365 days on test. (Mo.) column indicates month of test. Test day milk, marked with an asterisk (*), indicates herd was milked three times per day (3X). Information in this table is compiled from Dairy Records Management Systems Reports (Raleigh, NC).										

Top GA DHIA By Test Day Milk Production – Feb. 2015										
					<u>Test Day Average</u>				<u>Yearly Average</u>	
<u>Herd</u>	<u>County</u>	<u>Br.</u>	<u>Test Date</u>	<u>¹Cows</u>	<u>% Days in Milk</u>	<u>Milk</u>	<u>% Fat</u>	<u>TD Fat</u>	<u>Milk</u>	<u>Lbs. Fat</u>
RODGERS' HILLCREST FARMS INC.*	McDuffie	H	1/26/2015	438	88	99.4	3.4	2.87	31534	1064
DAVE CLARK*	Morgan	H	2/2/2015	1107	88	98	3.9	3.44	29237	1045
D & T DAIRY	Wilkes	H	1/30/2015	56	84	95.6	2.8	2.44	26428	717
A & J DAIRY*	Wilkes	H	2/23/2015	413	90	87.8	3.9	2.91	23948	899
J.EVERETT WILLIAMS*	Morgan	X	2/9/2015	1781	89	85.7	3.9	2.95	26506	1054
R & D DAIRY*	Laurens	H	1/23/2015	130	90	85.4	3.4	2.63	26095	958
MARTY SMITH DAIRY*	Wilkes	H	1/30/2015	327	85	83	3.1	2.3	24369	798
PHIL HARVEY #2*	Putnam	H	2/13/2015	1033	88	82.3	2.6	1.98	25117	793
COOL SPRINGS DAIRY*	Laurens	H	2/2/2015	242	90	82	3.4	2.64	25051	913
COASTAL PLAIN EXP STATION*	Tift	H	2/15/2015	282	90	81.7	3.6	2.74	26276	932
RAY WARD DAIRY	Putnam	H	2/16/2015	148	89	81.7	4.1	3.26	24099	901
DANNY BELL*	Morgan	H	2/5/2015	259	91	79.8	3.8	2.8	24767	957
MARTIN DAIRY L. L. P.	Heard	H	2/12/2015	325	90	79.8	3.7	2.8	24354	902
IRVIN R YODER	Macon	H	2/12/2015	214	90	79.7	3.7	2.59	23135	854
DOUG CHAMBERS	Jones	H	1/29/2015	427	88	79.6	3.8	2.65	24051	856
TROY YODER	Macon	H	2/14/2015	221	87	79.5	3.8	2.43	22722	890
MUDDY H HOLSTEINS	Hall	H	2/3/2015	75	89	77.5	3.4	2.24	23684	790
UNIV OF GA DAIRY FARM	Clarke	H	2/11/2015	129	88	76.3	4	2.89	21973	837
MARVIN YODER	Macon	H	2/25/2015	169	85	76.3	3.7	2.37	20493	751
MARK E BRENNEMAN	Macon	H	2/24/2015	146	88	76.3	3.3	2.29	19136	668
1Minimum herd or permanent string size of 20 cows. Yearly average calculated after 365 days on test. (Mo.) column indicates month of test. Test day milk, marked with an asterisk (*), indicates herd was milked three times per day (3X). Information in this table is compiled from Dairy Records Management Systems Reports (Raleigh, NC).										

Top GA DHIA By Test Day Fat Production – Feb. 2015										
					<u>Test Day Average</u>				<u>Yearly Average</u>	
<u>Herd</u>	<u>County</u>	<u>Br.</u>	<u>Test Date</u>	<u>¹Cows</u>	<u>% Days in Milk</u>	<u>Milk</u>	<u>% Fat</u>	<u>TD Fat</u>	<u>Milk</u>	<u>Lbs. Fat</u>
DAVE CLARK*	Morgan	H	2/2/2015	1107	88	98	3.9	3.44	29237	1045
RAY WARD DAIRY	Putnam	H	2/16/2015	148	89	81.7	4.1	3.26	24099	901
J.EVERETT WILLIAMS*	Morgan	X	2/9/2015	1781	89	85.7	3.9	2.95	26506	1054
A & J DAIRY*	Wilkes	H	2/23/2015	413	90	87.8	3.9	2.91	23948	899
UNIV OF GA DAIRY FARM	Clarke	H	2/11/2015	129	88	76.3	4	2.89	21973	837
RODGERS' HILLCREST FARMS INC.*	McDuffie	H	1/26/2015	438	88	99.4	3.4	2.87	31534	1064
EBERLY FAMILY FARM*	Burke	H	2/24/2015	691	91	76.1	4	2.81	22634	852
DANNY BELL*	Morgan	H	2/5/2015	259	91	79.8	3.8	2.8	24767	957
MARTIN DAIRY L. L. P.	Heard	H	2/12/2015	325	90	79.8	3.7	2.8	24354	902
COASTAL PLAIN EXP STATION	Tift	H	2/15/2015	282	90	81.7	3.6	2.74	26276	932
EARNEST R TURK	Putnam	H	2/24/2015	390	92	72.2	3.9	2.72	21453	807
FULLER-DAIRY-INC*FULLER- DAIRY-I	Putnam	H	2/17/2015	239	88	72.7	3.9	2.66	22006	834
DOUG CHAMBERS	Jones	H	1/29/2015	427	88	79.6	3.8	2.65	24051	856
OCKER DAIRY	Burke	X	2/18/2015	112	90	68	4.1	2.65	20214	787
CHARLES STEWART	Greene	H	2/10/2015	175	91	65.2	4.3	2.65	19372	753
COOL SPRINGS DAIRY*	Laurens	H	2/2/2015	242	90	82	3.4	2.64	25051	913
AMERICAN DAIRYCO- GEORGIA,LLC.*	Mitchell	H	2/4/2015	3765	90	73.3	3.9	2.64	23274	850
R & D DAIRY*	Laurens	H	1/23/2015	130	90	85.4	3.4	2.63	26095	958
CECIL DUECK	Jefferson	H	1/24/2015	85	90	73.1	4.1	2.63	24164	881
IRVIN R YODER	Macon	H	2/12/2015	214	90	79.7	3.7	2.59	23135	854
1Minimum herd or permanent string size of 20 cows. Yearly average calculated after 365 days on test. (Mo.) column indicates month of test. Test day milk, marked with an asterisk (*), indicates herd was milked three times per day (3X). Information in this table is compiled from Dairy Records Management Systems Reports (Raleigh, NC).										

Top GA Lows Herds for SCC Score Dec. 2014									
<u>Herd</u>	<u>County</u>	<u>Test Date</u>	<u>Br</u>	<u>Cows</u>	<u>Milk-Rolling</u>	<u>SCC-TD-Average Score</u>	<u>SCC-TD-Weight Average</u>	<u>SCC- Average Score</u>	<u>SCC-Wt.</u>
COOL SPRINGS DAIRY	Laurens	11/22/2014	H	203	24298	1.5	120	1.6	125
DAVID ADDIS	Wilcox	12/22/2014	H	42	18411	1.6	57	1.3	58
J.EVERETT WILLIAMS*	Morgan	12/8/2014	X	1754	25990	1.7	115	1.6	116
BERRY COLLEGE DAIRY	Floyd	12/20/2014	J	36	15316	1.8	64	1.8	110
BILL DODSON	Putnam	12/22/2014	H	248	22381	1.9	149	1.8	142
VISTA FARM	Jefferson	12/20/2014	H	93	24092	1.9	99	2.3	196
GARY LOTT	Heard	12/22/2014	H	95	11707	2	126	2.4	161
RAY WARD DAIRY	Putnam	12/15/2014	H	144	23820	2	152	2.6	248
DAVE CLARK*	Morgan	12/1/2014	H	1123	28779	2	121	1.9	125
IRVIN R YODER	Macon	12/4/2014	H	204	23468	2.1	160	1.8	114
R & D DAIRY*	Laurens	11/22/2014	H	113	25990	2.1	241	2.1	206
DANNY BELL*	Morgan	12/4/2014	H	263	24403	2.2	163	1.8	133
COASTAL PLAIN EXP STATION*	Tift	12/20/2014	H	285	26318	2.2	229	2.3	203
DONALD NEWBERRY	Bibb	12/2/2014	H	128	17327	2.3	156	2.8	282
SCOTT GLOVER	White	12/27/2014	H	101	26066	2.3	217	1.7	117
RANDY W. RUFF. SR	Elbert	12/10/2014	H	143	15314	2.4	160	2.9	248
TROY YODER	Macon	11/30/2014	H	226	22623	2.4	169	2.6	201
MARTY SMITH DAIRY	Wilkes	11/29/2014	H	322	24068	2.4	155	2.2	154
JUMPING GULLY DAIRY LLC*	Brooks	12/7/2014	X	1599	14430	2.5	230	2.5	227
BRENNEMAN FARMS	Macon	12/20/2014	H	129	19882	2.5	288	2.9	457
LEE WHITAKER	McDuffie	12/8/2014	H	277	20272	2.5	196	2.4	211
OCKER DAIRY	Burke	11/5/2014	X	103	20416	2.5	190	2.8	241
SOUTHERN ROSE FARMS	Laurens	12/10/2014	H	131	23412	2.5	195	2.5	251

1Minimum herd or permanent string size of 20 cows. Yearly average calculated after 365 days on test. (Mo.) column indicates month of test. Test day milk, marked with an asterisk (*), indicates herd was milked three times per day (3X). Information in this table is compiled from Dairy Records Management Systems Reports (Raleigh, NC).

Top GA Lows Herds for SCC Score – Jan. 2015									
<u>Herd</u>	<u>County</u>	<u>Test Date</u>	<u>Br.</u>	<u>Cows</u>	<u>Milk-Rolling</u>	<u>SCC-TD-Average Score</u>	<u>SCC-TD-Weight Average</u>	<u>SCC- Average Score</u>	<u>SCC-Wt.</u>
DAVID ADDIS	Wilcox	1/18/2015	H	45	18777	1.2	41	1.3	57
COOL SPRINGS DAIRY	Laurens	12/31/2014	H	232	24663	1.6	124	1.7	131
J.EVERETT WILLIAMS	Morgan	1/12/2015	X	1789	26336	1.7	119	1.6	117
DAVE CLARK	Morgan	1/5/2015	H	1104	29025	1.7	104	1.9	124
VISTA FARM	Jefferson	12/20/2014	H	93	24092	1.9	99	2.3	196
GARY LOTT	Heard	12/22/2014	H	95	11707	2	126	2.4	161
R & D DAIRY	Laurens	1/23/2015	H	130	26095	2	222	2.2	209
BILL DODSON	Putnam	1/26/2015	H	254	22552	2.1	180	1.9	147
IRVIN R YODER	McIntosh/Macon	1/9/2015	H	208	23243	2.1	126	1.8	117
RAY WARD DAIRY	Putnam	1/19/2015	H	145	23942	2.1	228	2.6	253
BERRY COLLEGE DAIRY	Floyd	1/18/2015	J	33	15506	2.2	98	1.8	111
DANNY BELL	Morgan	1/8/2015	H	259	24624	2.2	179	1.8	134
COASTAL PLAIN EXP STATION	Tift	1/19/2015	H	286	26323	2.2	186	2.3	202
JUMPING GULLY DAIRY LLC	Brooks	1/4/2015	X	1620	14452	2.3	260	2.4	234
SCOTT GLOVER	White	12/27/2014	H	101	26066	2.3	217	1.7	117
EUGENE KING	Macon	1/26/2015	H	116	19669	2.4	232	2.3	249
MARTIN HOSTETLER	Macon	1/25/2015	H	117	14214	2.5	273	2.7	330
DAN DURHAM	Greene	1/22/2015	X	133	17101	2.5	219	2.5	199
MARK E BRENNEMAN	Macon	12/29/2014	H	150	18735	2.6	286	2.8	258
DANIEL WEAVER	Macon	12/30/2014	H	73	18832	2.6	152	3.2	359
BOB MOORE DAIRY	Putnam	1/10/2015	H	240	18844	2.6	235	3.2	359
MARVIN YODER	Macon	12/22/2014	H	170	20755	2.6	251	2.6	250
SOUTHERN ROSE FARMS	Laurens	1/15/2015	H	138	23452	2.6	195	2.5	242

1Minimum herd or permanent string size of 20 cows. Yearly average calculated after 365 days on test. (Mo.) column indicates month of test. Test day milk, marked with an asterisk (*), indicates herd was milked three times per day (3X). Information in this table is compiled from Dairy Records Management Systems Reports (Raleigh, NC).

Top GA Lows Herds for SCC Score – Feb. 2015									
<u>Herd</u>	<u>County</u>	<u>Test Date</u>	<u>Br.</u>	<u>Cows</u>	<u>Milk-Rolling</u>	<u>SCC-TD-Average Score</u>	<u>SCC-TD-Weight Average</u>	<u>SCC- Average Score</u>	<u>SCC-Wt.</u>
DAVID ADDIS	Wilcox		H	47	19144	1.1	31	1.3	54
COOL SPRINGS DAIRY*	Laurens	2/2/2015	H	242	25051	1.6	110	1.7	135
J.EVERETT WILLIAMS*	Morgan	2/9/2015	X	1781	26506	1.6	107	1.6	116
BILL DODSON	Putnam		H	261	22554	1.8	130	1.9	150
DAVE CLARK*	Morgan	2/2/2015	H	1107	29237	1.8	105	1.9	124
BERRY COLLEGE DAIRY	Floyd		J	33	15792	2	78	1.9	112
R & D DAIRY*	Laurens		H	130	26095	2	222	2.2	209
IRVIN R YODER	Macon		H	214	23135	2.1	163	1.9	125
EUGENE KING	Macon		H	117	19634	2.2	203	2.3	251
BRENNEMAN FARMS	Macon		H	136	19853	2.2	216	2.9	459
VISTA FARM	Jefferson		H	89	23652	2.2	127	2.3	193
MARTIN HOSTETLER	Macon		H	115	14374	2.3	205	2.7	325
DANNY BELL*	Morgan	2/5/2015	H	259	24767	2.3	194	1.8	140
COASTAL PLAIN EXP STATION*	Tift		H	282	26276	2.3	187	2.3	201
JARRETT EVERETT	Macon		X	78	13027	2.4	140	3.2	281
DONALD NEWBERRY	Bibb		H	123	18245	2.4	288	2.8	285
TROY YODER	Macon		H	221	22722	2.4	153	2.7	211
RAY WARD DAIRY	Putnam		H	148	24099	2.4	194	2.5	252
DAN DURHAM	Greene		X	133	17101	2.5	219	2.5	199
RUFUS YODER JR	Macon		H	158	23162	2.5	173	2.5	254

1Minimum herd or permanent string size of 20 cows. Yearly average calculated after 365 days on test. (Mo.) column indicates month of test. Test day milk, marked with an asterisk (*), indicates herd was milked three times per day (3X). Information in this table is compiled from Dairy Records Management Systems Reports (Raleigh, NC

Cooperative Extension Services
Department of Animal & Dairy Science
University of Georgia
Athens, GA 30602

Dairyfax Newsletter Enclosed