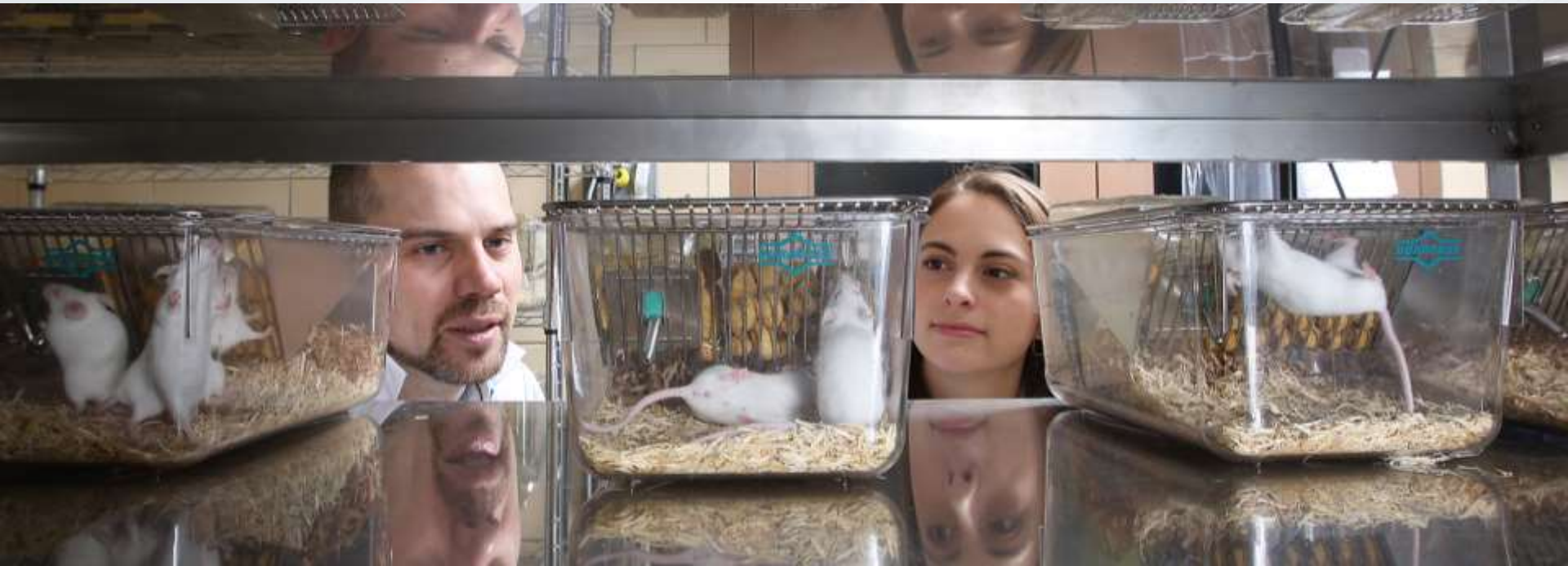


# UGA Animal Care & Use

**Leanne Alworth, DVM, MS, DACLAM**

Attending Veterinarian

Office of Animal Care and Use, Office of Research Compliance, OVPR



# Who am I?

- OVPR
  - Office of Research Compliance
    - Office of Animal Care and Use
- Attending Veterinarian

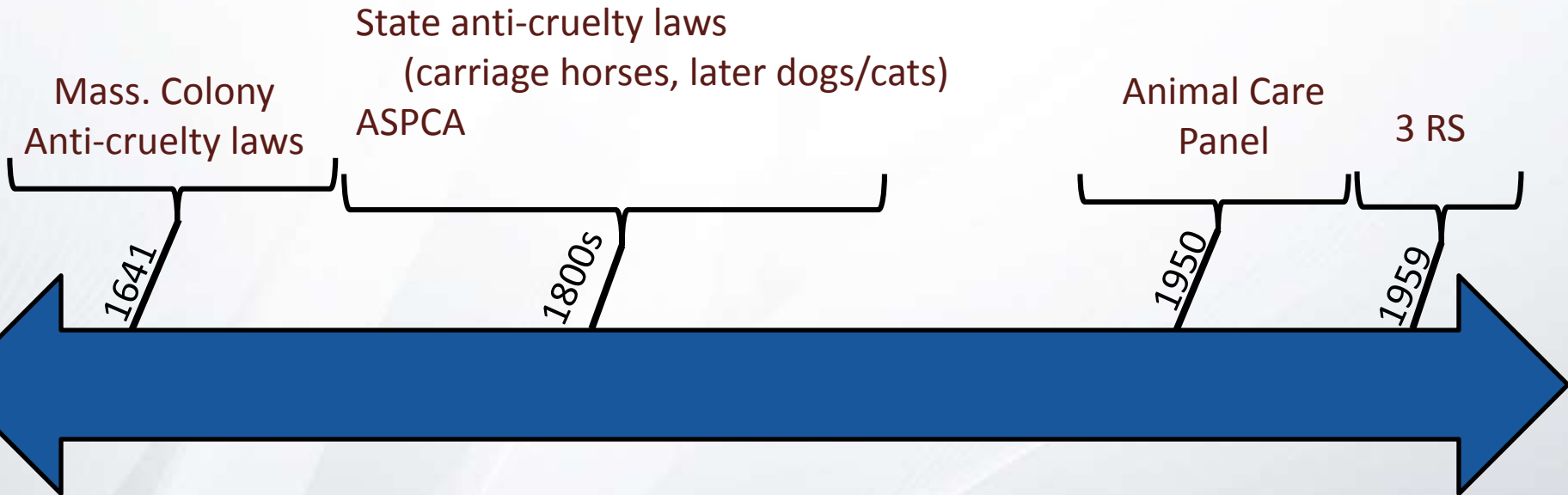
# Topics

- **Regulations in general**
  - History in USA
  - Regulations and Guidelines
  - Institutional Animal Care and Use Committee (IACUC)
- **UGA**
  - Animal Use Protocol (AUP)
  - Occupational Health and Safety Program
  - University Research Animal Resources (URAR)
- **AAALAC Accreditation**
- **Contact information**

# Regulations



# History of Regulation



Animal Care Panel (self-regulation):

- Lobbies unsuccessfully for national animal welfare legislation
- 1963: Publishes the 1<sup>st</sup> ed. Guide for Care and Use of Laboratory Animals

# 3 Rs

- *The Principles of Humane Experimental Technique* (1959)
- Russell, W.M.S. and Burch, R.L.
  
- Reduce
- Replace
- Refine

# Media Coverage of Animal Welfare



*“Pepper the Dalmatian”  
Sports Illustrated 1965*



*“Concentration Camps for Dogs”  
Life Magazine 1966*

# Animal Welfare Act

- Congress passed in 1966
- Established Animal Welfare Regulations
- USDA (APHIS/Animal Care) enforces





# Animal Welfare Act

- Regulations set minimum standards for care and use of animals
- LAW: Everyone must follow (as applicable)



# USDA Documents

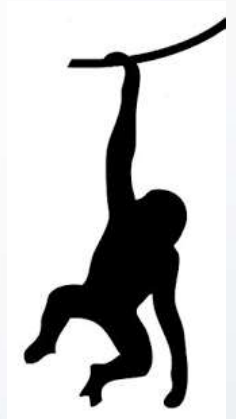
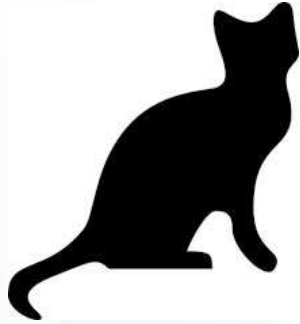
Animal Welfare Code of Federal Regulations (CFR)

Title 9, Animals and Animal Products

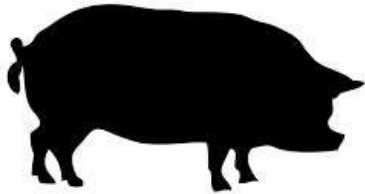
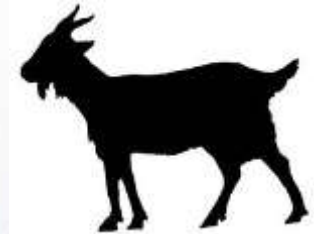
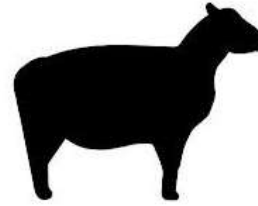
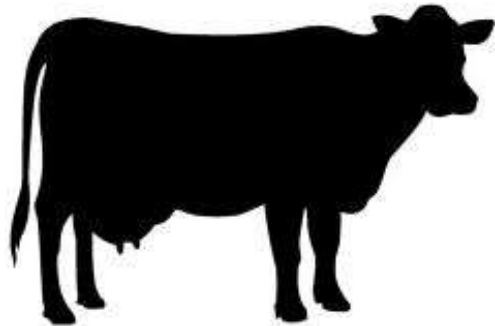
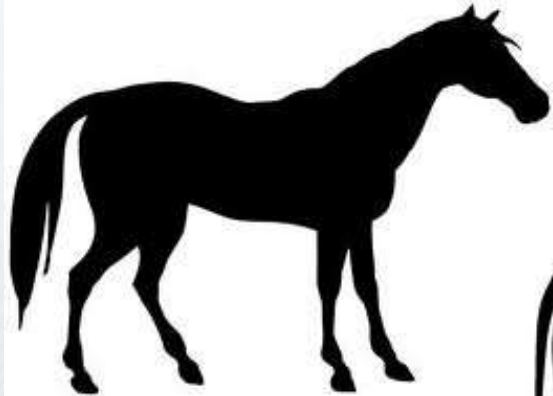
Subchapter A - Animal Welfare, Parts 1-4

- Definitions
  - Regulations
  - Standards
- 
- Amended over time
    - Acquisition, Transportation, Housing
    - Research use
    - Psychological enrichment for NHPs and dogs

# Species covered by AWA



# Species sometimes Covered, sometimes not Covered\*



\* Depends on research use

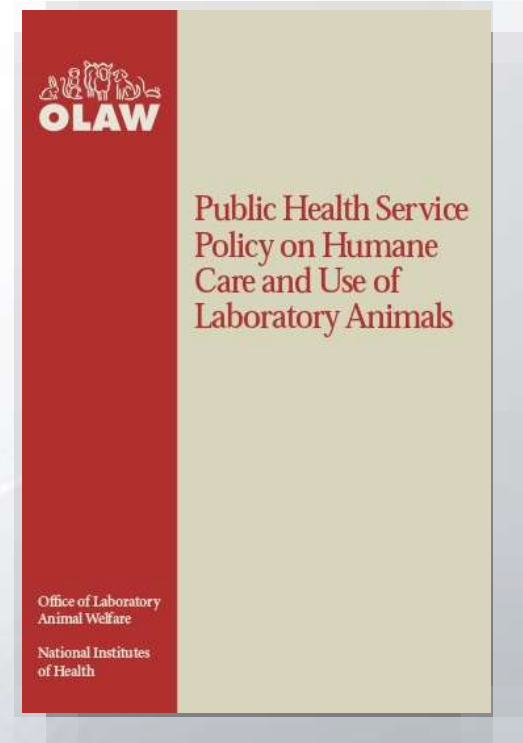
+ some wildlife

# Species Excluded from AWA

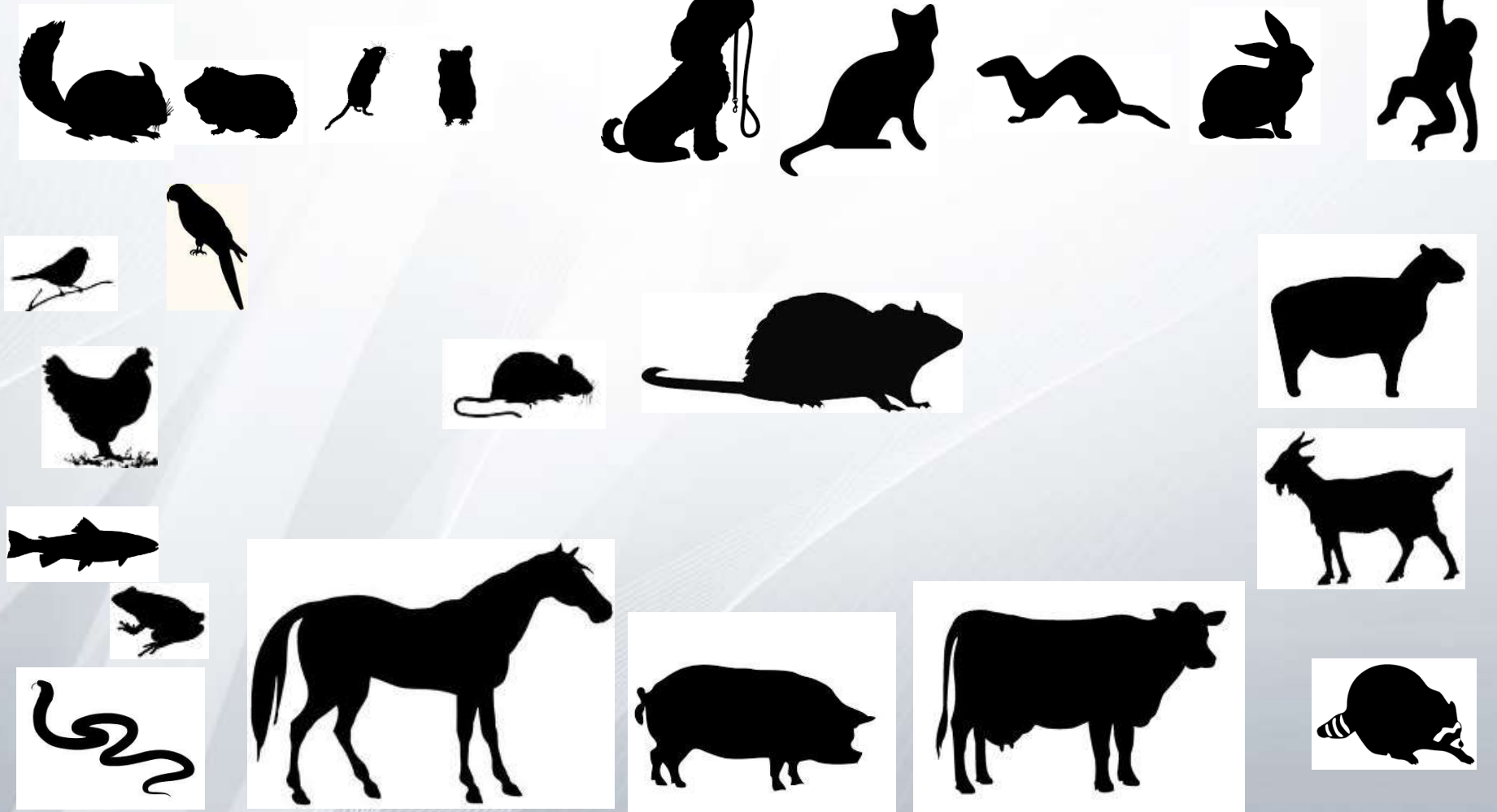


# Health Research Extension Act

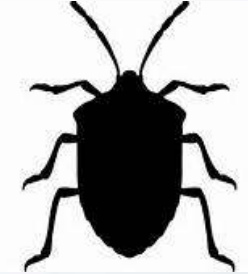
- Congress passed in 1985
- Established Public Health Services Policy Regulations
- NIH/Office of Laboratory Animal Welfare (OLAW) enforces regulations



# Species covered by PHS Policy



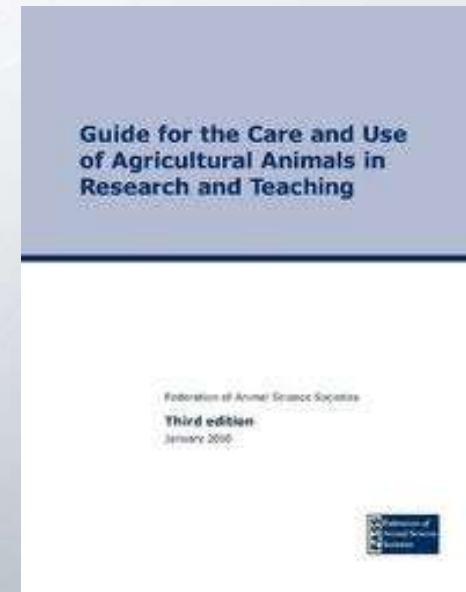
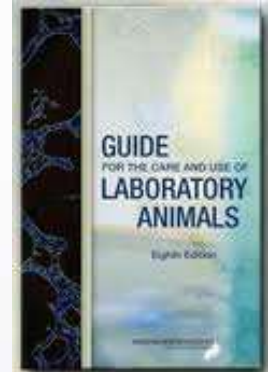
# Species Excluded from PHS Policy





# OLAW Documents

- U.S. Government Principles for Utilization and Care of Vertebrate Animals Used in Testing
- PHS Policy on the Humane Care and Use of Laboratory Animals
- NRC Guide for the Care and Use of Laboratory Animals in Research, and Teaching (“The Guide”)
  - Institutional Policies and Responsibilities
  - Animal Environment, Housing, and Husbandry
  - Veterinary Medical Care
  - Physical Plant
- Guide for the Care and Use of Agricultural Animals in Research and Teaching (FASS)
- American Veterinary Medical Association (AVMA) Euthanasia Guidelines



# US Government Principles

1. Research must be relevant and beneficial
2. Research by a qualified scientist and training provided
3. Appropriate species, quality and quantity
4. Avoid or minimize pain, discomfort and distress
5. Provide analgesia and anesthesia
6. Necessary and humane euthanasia
7. Appropriate living conditions with oversight and access to veterinary care
8. Transportation and care must be in accordance with AWA and other federal guidelines
9. All exception to the Guide at the discretion of an IACUC, not Investigator and not for teaching or demo

# Animal Welfare Assurance



# 4 “Legs” of the Animal Care Program

- **Researcher (PI)**
  - **Institutional Official (IO)**
    - » **Institutional Responsibilities**
  - **Attending Veterinarian (AV)**
    - » **Adequate Veterinary Care**
  - **Institutional Animal Care and Use Committee (IACUC)**
- 

# Institutional Animal Care and Use Committee (IACUC)



- Mandated by federal laws
- Must provide internal oversight and ensure regulatory compliance of animal care and use program
- At least 5 members, including
  - 1 practicing scientist
  - 1 non-scientist
  - 1 non-affiliated public/community representative
  - 1 attending veterinarian

# UGA's IACUC

**6 Veterinarians**

**~7 Scientists**



**1 Environmental  
Safety  
Professional**

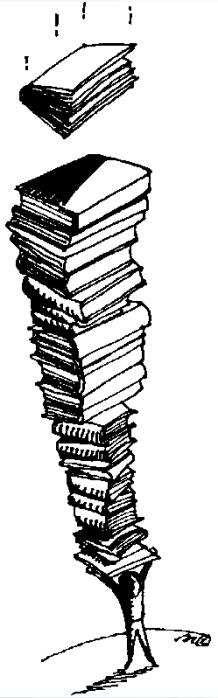
**1 Animal Care  
Technician**

**1 BioSafety  
Professional**

**2 Unaffiliated**

# IACUC Responsibilities

- Review animal care and use program (2x/yr)
- Inspect all animal housing and use areas (2x/yr)
- Make recommendations to institution administrators
- Review and investigate animal welfare concerns
- Notify OLAW/USDA of reportable incidents
- Review animal use proposals and modifications



# Animal Welfare Concerns

## Animal Welfare *Begins with you*



- *The University of Georgia is committed to the humane care of the animals used in its research and instructional activities.*
- *If you have a question or concern about animal welfare, we want to hear about it. We urge you to report concerns to your supervisor or to the University's Institutional Animal Care and Use Committee (IACUC) as listed below.*
- It is your obligation to report any concerns about animal welfare.
- Please see University of Georgia's Policy on the Care and Use of Animals and the Policy on Reporting Deficiencies in Animal Care.  
<https://www.ovpr.uga.edu/forms/animalcarepolicy.pdf>

### **Humane Care Confidential Contacts**

IACUC@uga.edu  
IACUC Executive Secretary: 706-542-4426  
University Director of Animal Care and Use: 706-542-5938  
Emergency Animal Care Contact: 706-542-7204

**\*The identity of persons reporting concerns is held strictly confidential\***



# AUP: Animal Use Proposal (Protocol)

- Any animal use for research or teaching **must** be covered by an AUP which the IACUC has reviewed and approved
- Describes animal use plan
- Provides information required by regulations
- Legal document
- Regulatory agencies have access
- FOIA—public can get access





Georgia electronic administration of Research



Home Applications & Databases Training Gear Blog

Artemis is an electronic Animal Use Proposal Submission and Review web application used by the IACUC on the UGA campus.

ARTEMIS LOGIN

About Support Training FAQs Announcements

### Purpose

Artemis was developed to enable electronic submission and review of Animal Use Proposals via most modern web browsers. Artemis provides real-time access to information regarding review status, approval status and expiration dates.

### History

Artemis officially launched November 1, 2010.

# Tips for Writing an AUP

- Use layterms and don't assume knowledge in your expertise area
- Make sure you answer the specific question asked
- Provide the general experimental design (groups)
- Clearly explain what will be done with animals in a logical/chronological way
- Avoid inconsistencies with details
  - Provide details in 1 location
- Contact IACUC office/AV with questions

# Risk Based AUP Review



## C Protocols

- Veterinary review
- IACUC meeting with discussion and approval by full IACUC
- Meetings are 3<sup>rd</sup> Thursday each month

## B Protocols

- Veterinary review
- Second Member review
- IACUC electronic review and approval (“Weekly List”)

## A and D Protocols

- Veterinary review
- IACUC electronic review and approval

# Review of Other Items



## Amendments to Approved AUPs

General amendment

one of above methods

Administrative change

Administrative (staff) approval

VVC – Veterinary Verification and Consultation

Vet “approves”

## Annual Renewal

At 1<sup>st</sup> and 2<sup>nd</sup> anniversary of AUP approval

Continuous review required by regulations

\*3<sup>rd</sup> Anniversary—NEW AUP required

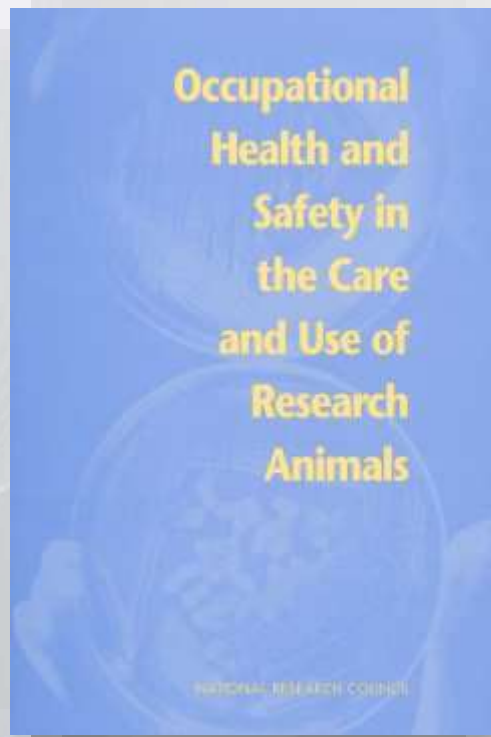
# Requirements

- Occupational Health & Safety Program (OHSP)
  - Must enroll by completing OHSP Questionnaire online
  - Even if participation is declined, must submit
- Training
  - IACUC 101 (+ IACUC 101 Refresher every 3 years)
  - Staying Healthy (one time)  
Access through the GEAR website at <http://gear.ovpr.uga.edu>  
Use UGA MyID and Password
  - 1 hour of related CE every 3 years
- ALL personnel listed on an AUP MUST be up to date with all above items for approval

# OHSP

**Any faculty, staff, student, volunteer, visitor who...**

- Works with vertebrate animals, or animal tissues, fluids, secretions, and/or excretions
- Handles cages and related equipment contaminated by animal tissues, fluids, secretions and/or excretions; or routinely enters into facilities where animals are maintained
- Works with biohazardous agents





Georgia electronic administration of Research



Home Applications & Databases Training Gear Blog

Artemis is an electronic Animal Use Proposal Submission and Review web application used by the IACUC on the UGA campus.

ARTEMIS LOGIN

About Support Training FAQs Announcements

### Purpose


Artemis was developed to enable electronic submission and review of Animal Use Proposals via most modern web browsers. Artemis provides real-time access to information regarding review status, approval status and expiration dates.

### History

Artemis officially launched November 1, 2010.



# OHSP Questionnaire



Office of the  
Vice President for **Research**  
at the university of georgia

**Office of Animal Care & Use and Office of Biosafety  
Occupational Health Questionnaire**

**For questions about this form, contact:**

<b>Office of Animal Care &amp; Use</b>	<b>Office of Biosafety</b>
706-542-5933	706-542-2697
<a href="mailto:iacuc@uga.edu">iacuc@uga.edu</a>	<a href="mailto:biosfty@uga.edu">biosfty@uga.edu</a>

**Return completed questionnaire to:**  
Office of Animal Care and Use  
608 Boyd Graduate Bldg., Athens, GA 30602  
**Or by email:** [occhealt@uga.edu](mailto:occhealt@uga.edu)

NAME (Last, first, middle initial)	DEPT. EMAIL	PI-SUPERVISOR
DEPARTMENT	JOB TITLE	UGA ID (begins with 810 at bottom of UGA Card)
		8 1 0 [ ] [ ] [ ] [ ] [ ] [ ] [ ] [ ] [ ] [ ]
CAMPUS PHONE	ALTERNATE PHONE	

**PURPOSE:** An occupational health and safety program is an essential element in providing a safe environment for people involved in animal care and use programs or working with biohazardous agents. This questionnaire should be completed upon hire or when applicable changes occur in work. The extent and level of participation is determined by assessing the risk posed by exposure to animals, materials, and work practices being used, biohazards an individual is working with, and the susceptibility of persons involved. The purpose of this form is to obtain individual health history for an employee working with animals or hazardous agents as the basis for risk assessment and reducing risks to the greatest extent possible.

**CONFIDENTIALITY STATEMENT:** Program health care professionals will alert the employee as to extraordinary animal related risks due to medical conditions and inform supervisors only as to fitness for assigned duties. Any documents or information generated or received by UGA related to occupational health and safety are part of your employment record, and your rights to the confidentiality of your personal health information will be strictly maintained.

**DECLINE TO PARTICIPATE:** You may decline to answer the questions on this form; however, certain medical conditions may increase your risk of potential health problems when working with animals or biohazards. These conditions may include: animal related allergy, back injury, pregnancy risks to unborn fetus, and immune suppression. If any of these conditions apply, consult with your physician or occupational health professional. Participation in this program may be a requirement for some specific jobs at UGA; contact your supervisor if you have questions about such requirements. Animal Care and Use or Biosafety will answer any questions you may have about this form or other health concerns in working with animals or biohazardous agents.

**Signature of Employee**

**PI Initial** **Date**

**Must complete this section if you decline to participate**

# University Research Animal Resources

## URAR

*Provides appropriate husbandry and handling of laboratory animals through animal facility management, technical assistance, training and consultation*



# URAR Facilities



- 8 animal facilities around campus representing almost 30,000 sq ft of animal housing space and 3 off-site centers
- Providing the support for over 220 PIs representing 6 colleges of UGA and almost 600 research or instructional protocols annually.

# State-of-the-Art Animal Spaces



# Range of Animals



➤ Over 22,000 animals on any given day, ~25 different species

# Animal Experts



- **Over 30 full-time and 20 part-time employees**
- **Over 70% of full-time employees are AALAS certified**
- **Full-time employees on average have almost 15 years of experience.**
- **4 Board-Certified Lab Animals Veterinarians**
- **2 Full-Time Veterinary Technicians**

# Training Available

Online



Safety Training



Webinars



Aseptic Technique



Regulation Seminars



Special Procedures

# AAALAC Accreditation

- Association for the assessment and accreditation of laboratory animal care
  - Now “AAALAC, International”
- Peer-review
- Voluntary
- Gold seal of approval
- UGA—much of program is AAALAC accredited
- Visit every 3 years (due summer 2017)





# CONTACTS

**OVPR-OFFICE OF RESEARCH COMPLIANCE  
OFFICE OF ANIMAL CARE AND USE  
212 TUCKER HALL**

[research.uga.edu/oacu/](http://research.uga.edu/oacu/)  
[research.uga.edu/oacu/iacuc/](http://research.uga.edu/oacu/iacuc/)

**(706) 542-5933**

# IACUC/OACU CONTACTS

- Dr. Leanne Alworth
  - Director
  - [alworth@uga.edu](mailto:alworth@uga.edu); 2-6084
- Eric Smith
  - IACUC Coordinator
  - [smitty8@uga.edu](mailto:smitty8@uga.edu); 2-4004
- Lisa Kelly
  - OVPR Training and Quality Assurance Coordinator
  - [lmkelly@uga.edu](mailto:lmkelly@uga.edu); 3-0816
- Dr Gaylen Edwards
  - IACUC Chair
  - Physiology and Pharmacology, CVM

# URAR CONTACTS

- Dr. Lois Zitzow
  - Director
- Dr. Steve Harvey
  - Assistant Director/Clinical Services
- Mr. Ben Bonner
  - Facilities Manager
- Ms. Melissa Martinez
  - Administrative Associate
- H385 VET MED BUILDING
  - 2-4173
- [research@uga.edu/oacu/urar](mailto:research@uga.edu/oacu/urar)

**(706) 542-7204 (EMERGENCY VET CARE)**



# Questions?



Animal Care & Use